

SUPPLIER	LIVERANI s.r.l.	MACHINE	DIRECT_60_80	YEAR	9/2014
CATEGORY	PUMPS	TYPE	MUST AND WINE PUMPS	SERIE	DIRECT

DIRECT 60-80



Direct 80

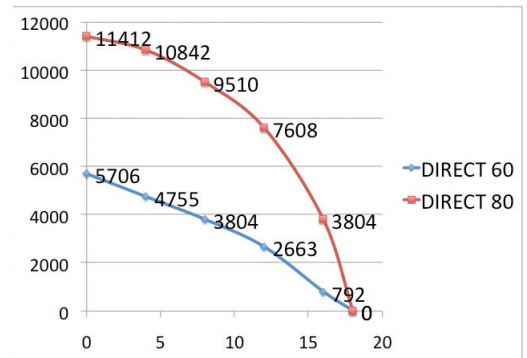
Direct 60

2.0" tri-clover fittings
55 GPM
220 Volt, 2 hp
Three phase motor
On off switch
25 ft power cable

Direct 80

3.0" tri-clover fittings
155 GPM
220 Volt, 3 hp
Three phase motor
On off switch
25 ft power cable
50 ft remote with forward & reverse & speed controls

These direct drive pumps are suitable for wine, juice transfer and must pumping, both have a 3-phase motor.

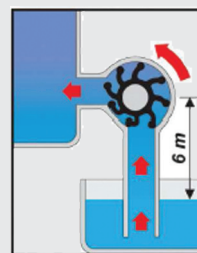


Type	Weight Lbs.	Motor Type	HP	KW	RPM	Ref.	H (m) = Head - Q (gal/h) = Capacity										
							0	4	8	12	16	18	24	27	30	32	H
DIRECT 60	68	TF	2	1.49	840	8	5706	4755	3804	2663	792	0					
DIRECT 80	150	TF	4.5	3.35	564	9	11412	10842	9510	7608	3804	0					

Flexible impeller pump

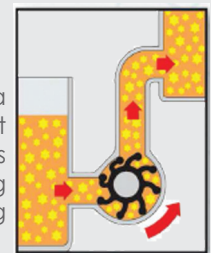


Liverani's flexible impeller pumps are made of food grade rubber that rotates inside an eccentric Stainless steel housing. Flexible impeller pumps are simple and economical to use, they are self priming and capable of lifting wine up to six meters. Due to the forgiving nature of the rubber impeller, they can pump liquids with suspended particles such as seeds and skins without damage.



Self-priming (automatic priming of the product up to 6 meters even from dry start-up).

Excellent priming action even at a low RPM. Allows for transfer of soft and fragile fluids, with solid parts in suspension, without causing airlocking, and avoiding emulsifying or damaging solid parts.



DISCLAIMER: The information contained in this flyer is for general information purposes only. The information is provided by Prospero Equipment Corporation, and while we endeavor to keep the information up to date and correct, we make no representations or warranties of any kind, express or implied, about the completeness, accuracy, reliability, suitability or availability with respect to the website or the information, products, services, or related graphics contained on the flyer for any purpose. All rights not expressly granted are reserved. All copyrights, trademarks, and registered trademarks are the property of their respective owners. All images, text, custom graphics are the property of Prospero Equipment Corp. or their respective owners. The exclusive property are protected by U.S. and international copyright laws. Any other use of such contents, including the reproduction, modification, distribution, transmission, display or performance of the contents of this flyer without the prior written consent of Prospero Equipment Corp. is expressly forbidden.

Corporate Office 123 Castleton Street Pleasantville, NY 10570 Phone: (914) 769-6252 Fax: (914) 769-6786 info@prosperocorp.biz	North 2204 State Route 14 N Geneva, NY 14456-9510 Phone: (315) 719-0480 Fax: (315) 719-0481 geneva@prosperocorp.biz	Northwest 1722 SW HWY 18 Suite B McMinnville, OR 97128 Phone: (503) 472-6767 Fax: (503) 472-6768 northwest@prosperocorp.biz	West Coast 7787 Bell Road Windsor, CA 95492 Phone: (707) 838-2812 Fax: (707) 838-3164 westcoast@prosperocorp.biz	Canada 8100 Trans Canada Hwy - Unit I Montreal, Quebec, H4S 1M5 Phone: (514) 336-7117 Fax: (514) 418-2605 canada@prosperocorp.biz	British Columbia Authorized Agent Stefan Buhl Phone: Phone: (250) 317-4378 bc@prosperocorp.biz
---	---	---	--	---	--